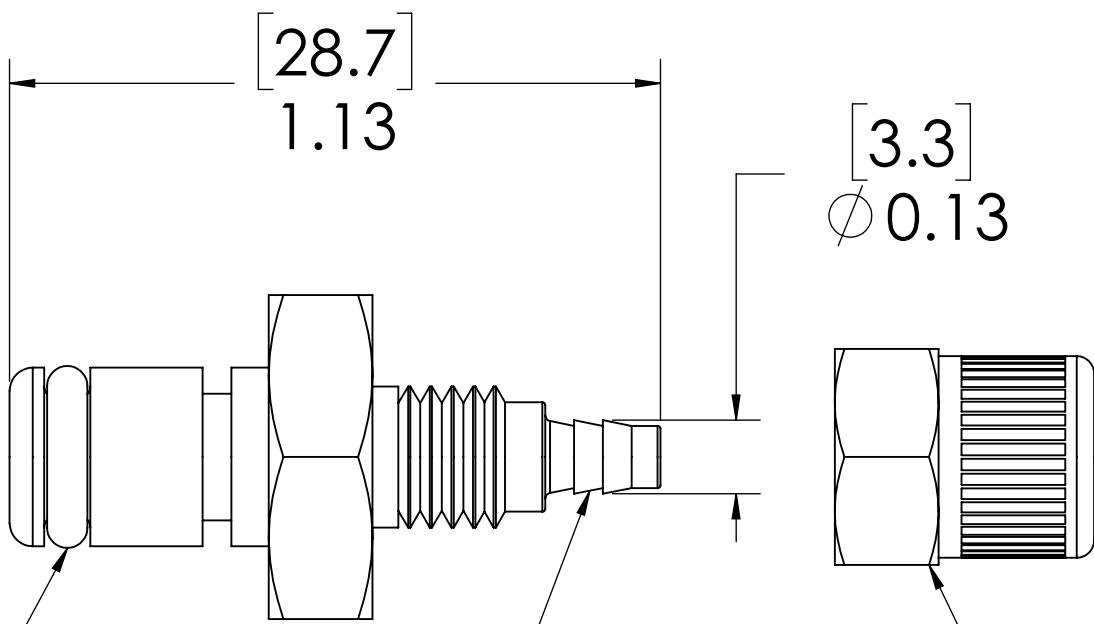
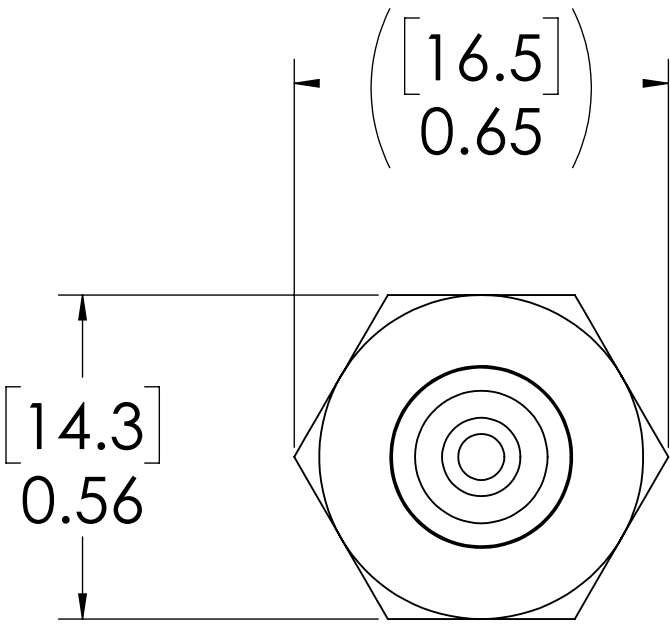
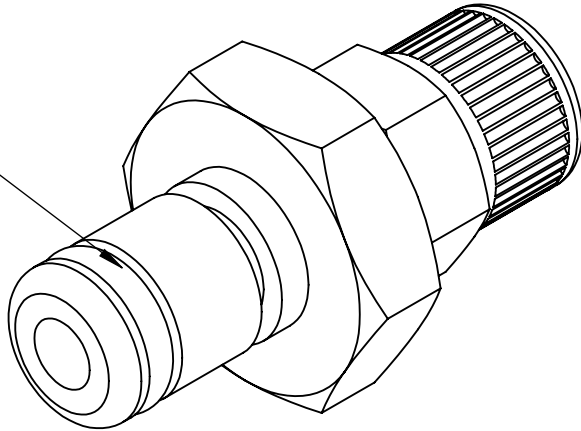


REVISIONS						
SHEET	ZONE	REV.	ECO	DESCRIPTION	DATE	APPROVED
1	ALL	A	50253	2017 FORMAT UPDATE	10/18/2018	HRC

**PLUG,  
(BRASS, NICKEL  
AND CHROME PLATED)**



**O-RING  
(BUNA-N)**


**5/32" TUBE OD**

**PTF NUT  
(BRASS, NICKEL PLATED)  
(PACKAGED SEPARATELY)**

**NOTES:**

- 1. MATERIAL: BRASS
- 2. COLOR: CHROME
- 3. O-RING MATERIAL: BUNA-N
- 4. O-RINGS LUBRICATED WITH FOOD GRADE SILICONE OIL, 350 CST.

**FOR REFERENCE ONLY**

UNLESS OTHERWISE SPECIFIED:		NAME	DATE	 PART NO: 20CB-PB9-025 DESCRIPTION: LinkTech 20CB Series Straight Male, Non-valved, 532 PTF, Chrome Brass
DIMENSIONS ARE IN INCHES TOLERANCES: FRACTIONAL ± 1/32 ANGULAR, MACH ± 0.5 BEND ± 2 ONE PLACE DECIMAL ± 0.1 TWO PLACE DECIMAL ± 0.01 THREE PLACE DECIMAL ± 0.005 TWO PLACE DECIMAL (mm) [± 0.12]	DRAWN	RDA	1/18/2018	
	CHECKED	HRC	1/18/2018	
	ENG APPR.	HRC	10/18/18	
PROPRIETARY AND CONFIDENTIAL THE INFORMATION CONTAINED IN THIS DRAWING IS THE SOLE PROPERTY OF LINKTECH LLC. ANY REPRODUCTION OR DISCLOSURE IN PART OR AS A WHOLE WITHOUT THE WRITTEN PERMISSION OF LINKTECH LLC IS STRICTLY PROHIBITED.	MFG APPR.	BDB	10/18/18	SIZE DWG. NO. REV C 20CB200058 A SCALE: NTS WEIGHT: SHEET 1 OF 1
	PRODUCTION	LS	10/18/18	
	COMMENTS:			